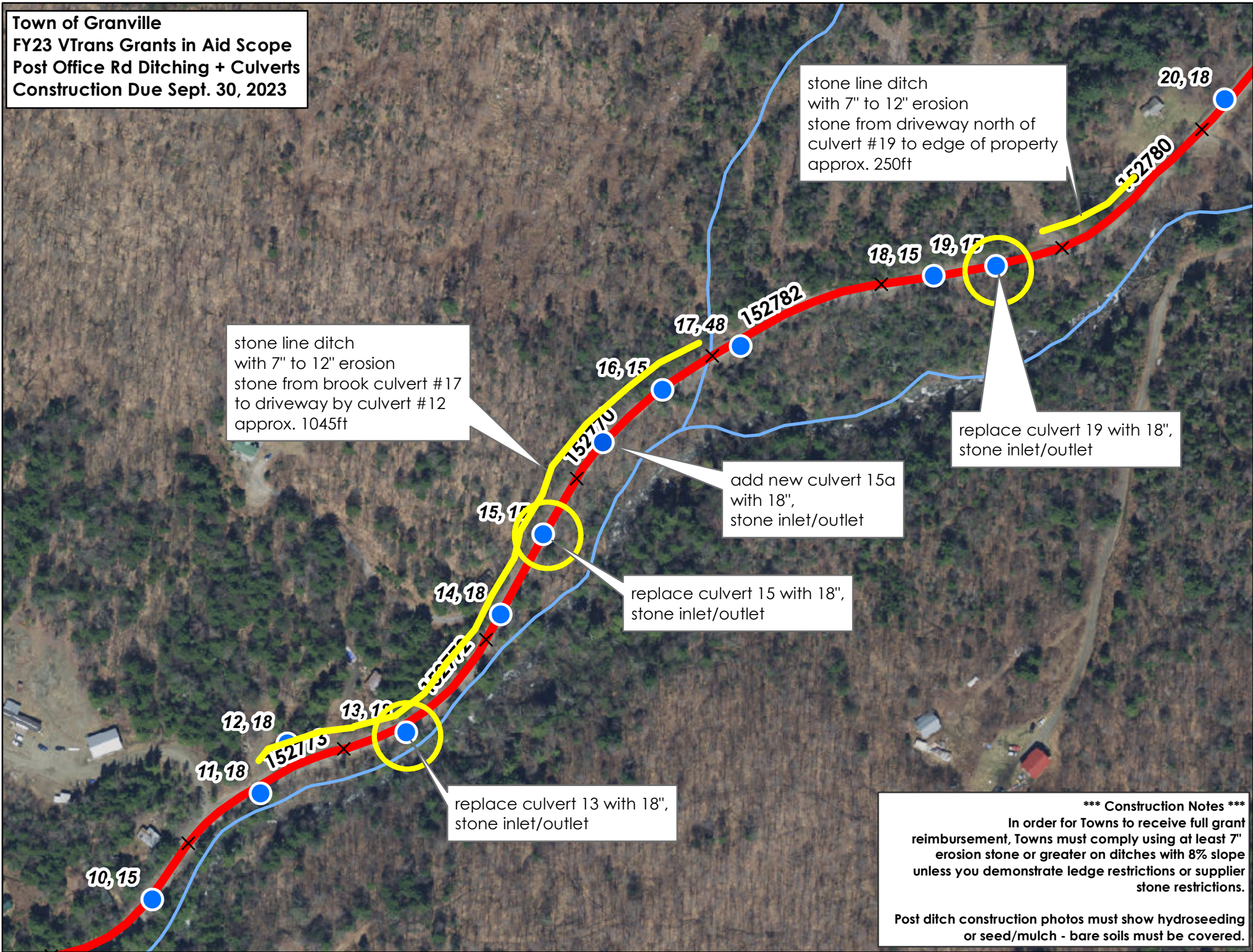


Town of Granville
FY23 VTrans Grants in Aid Scope
Post Office Rd Ditching + Culverts
Construction Due Sept. 30, 2023



stone line ditch
with 7" to 12" erosion
stone from driveway north of
culvert #19 to edge of property
approx. 250ft

stone line ditch
with 7" to 12" erosion
stone from brook culvert #17
to driveway by culvert #12
approx. 1045ft

replace culvert 19 with 18",
stone inlet/outlet

add new culvert 15a
with 18",
stone inlet/outlet

replace culvert 15 with 18",
stone inlet/outlet

replace culvert 13 with 18",
stone inlet/outlet

***** Construction Notes *****
In order for Towns to receive full grant
reimbursement, Towns must comply using at least 7"
erosion stone or greater on ditches with 8% slope
unless you demonstrate ledge restrictions or supplier
stone restrictions.

Post ditch construction photos must show hydroseeding
or seed/mulch - bare soils must be covered.