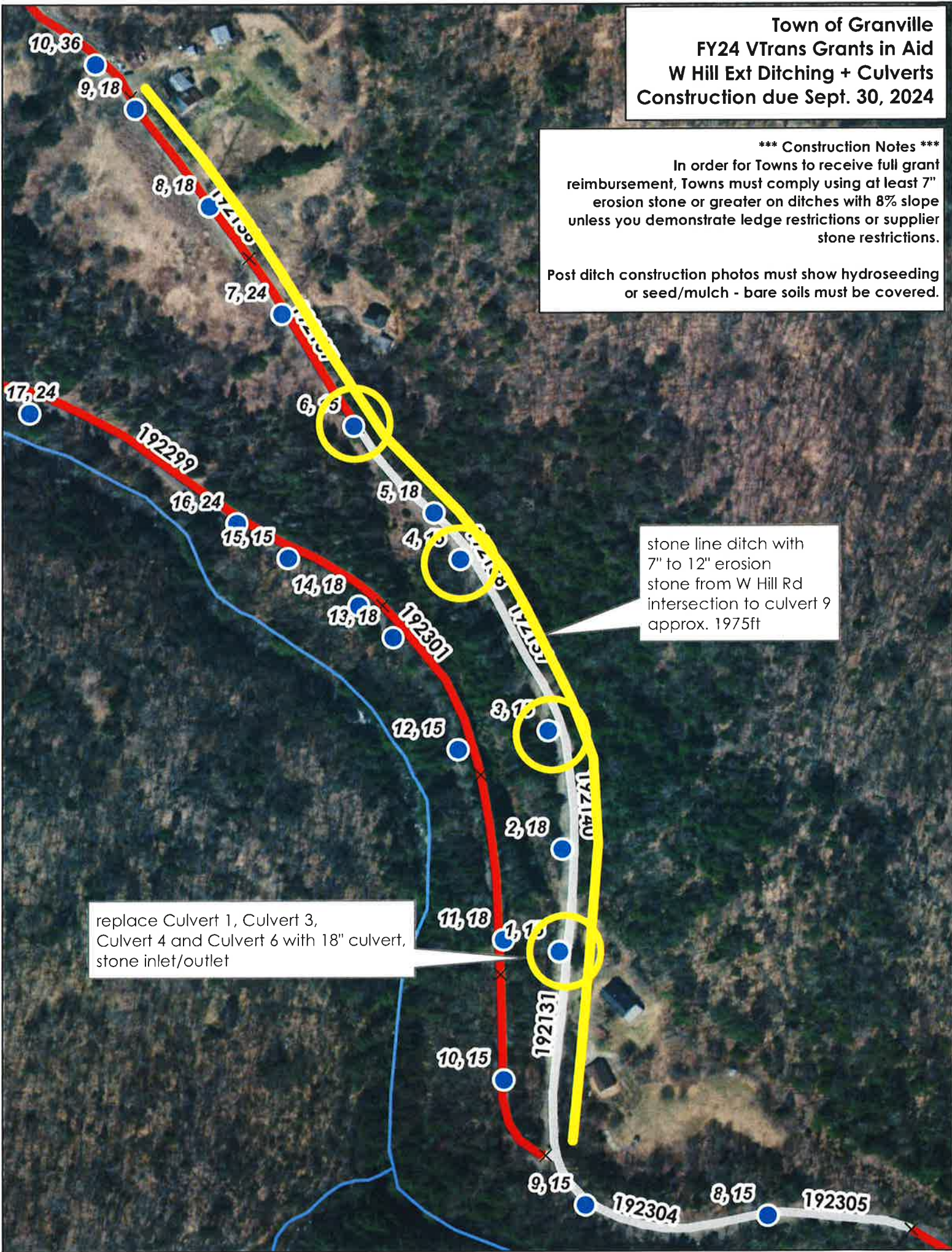


**Town of Granville
FY24 VTrans Grants in Aid
W Hill Ext Ditching + Culverts
Construction due Sept. 30, 2024**

***** Construction Notes *****
In order for Towns to receive full grant reimbursement, Towns must comply using at least 7" erosion stone or greater on ditches with 8% slope unless you demonstrate ledge restrictions or supplier stone restrictions.
Post ditch construction photos must show hydroseeding or seed/mulch - bare soils must be covered.



stone line ditch with 7" to 12" erosion stone from W Hill Rd intersection to culvert 9 approx. 1975ft

replace Culvert 1, Culvert 3, Culvert 4 and Culvert 6 with 18" culvert, stone inlet/outlet